

MAJESTY  *YACHTS*

SUPERYACHT COLLECTION

105

MAJESTY 105







Saloon





Dining Area



Main Galley



Owner's Stateroom



Top . Owner's En Suite | Bottom . Owner's Office



Double Guest Stateroom



Double Guest En Suite



Twin Guest Stateroom



Twin Guest En Suite



Bow Seating



Cockpit Seating



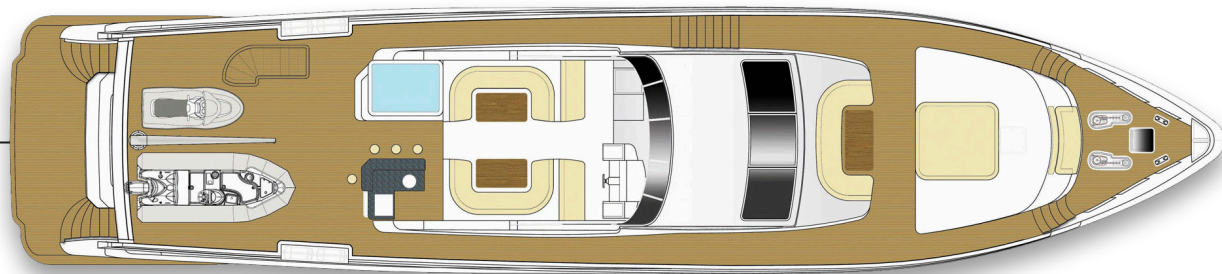
Fly-bridge



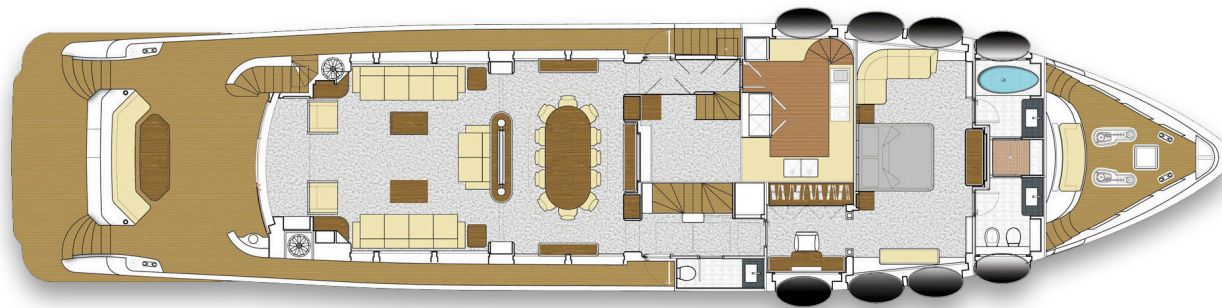
Fly-bridge Seating



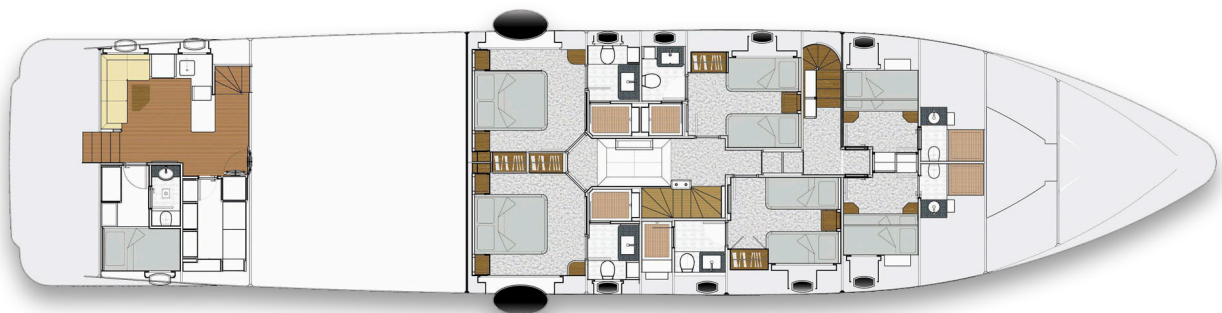




FLY-BRIDGE



MAIN DECK



LOWER DECK

TECHNICAL SPECIFICATIONS

LENGTH OVERALL	106 FT 9 IN (32.56 M)
BEAM	23 FT 4 IN (7.10 M)
DRAFT	5 FT 2 IN (1.60 M)
DISPLACEMENT	120 T APPROXIMATELY
FUEL CAPACITY	4,200 US GAL (15,900 L)
FRESH WATER CAPACITY	800 US GAL (3,030 L)
BLACK WATER CAPACITY	170 US GAL (640 L)
GREY WATER CAPACITY	170 US GAL (640 L)
GENERATORS	2 X 50 KW, 50 HZ
ENGINES	2 X 1,900 HP

Please note this is the technical specifications of Majesty 105. Gulf Craft reserves the right to add, modify or delete specifications and features at any time as part of our continuous product improvement programme.

Please note this is the technical specifications of Majesty 105. Gulf Craft reserves the right to add, modify or delete specifications and features at any time as part of our continuous product improvement programme.

DECK FITTINGS

- Main deck, Side Gunnel Area, Swim platform and aft Cockpit.
- Side pantograph door on main deck Port side gunwale to and Crew lounge.
- Elliptical side windows (10) and stainless steel framed openable elliptical Port holes (11)
- Sea side view Port hole cum windows (2)
- Port and Starboard side bulwark doors at aft and mid ship.
- Side windows (12mm thickness toughened glass).
- Pilot house wind screen with stainless steel trims (12mm thickness toughened glass).
- Stainless steel framed sliding door to Saloon.
- Water tight side deck doors on port and starboard side.
- Deck hatch access to chain locker.
- Forward deck hatch access for Owner's stateroom.
- Engine room Water/Gas tight door.
- Lockable water tight door from aft cockpit to crew lounge.
- Flybridge wind deflector screen.
- Stainless steel Port and Starboard side anchor pockets.
- Stainless steel Hauser pipes (6)
- Stainless steel deck cleats (6).
- Stainless steel hand rails (AISI 316L, Stainless steel tube/pipe).
- Stainless Steel Stanchions.
- Stainless steel Transom doors with signage 105.
- Wind screen wipers with fresh water connection.
- LED deck lighting and Flood lights.
- Fuel, Water fillers and Black tank overboard discharge on side deck.
- Storage within aft seat moulding.
- Ceiling lights (at aft cockpit).
- Locker with Fire damper pull-pin cables, Emergency fuel shutoff valve pull-pin cable, Engine room fire cylinder pull cable.
- Scupper drains will be provided as per drawing plan.
- Forward area fiber glass sofa seats with upholstered seats.

AFT COCKPIT

- Stainless steel framed sliding door to main saloon.
- Teak table with stainless steel bases.
- Upholstered sofa seats.
- Stainless steel stanchions.
- Integral stairway to fly-bridge.
- Lockable water tight door to crew cabin.
- Stainless steel transom doors.
- Steps down to bathing platform.
- Hot and cold water transom shower.
- Deck wash.
- 380220V, 3-Phase, 50Hz Shore power inlet cable and cable storage.
- Locker with port and starboard side fire dampers pull-out pins, engine room fire extinguisher pull-out pin and fuel shutoff valve pull-out pin cable.
- LED lighting to fly-bridge staircase.
- Ceiling speakers linked with Saloon entertainment system (2).
- Self draining.

FLY-BRIDGE

- Stainless steel framed sliding door to wheelhouse.
- Stairway from aft cockpit.
- Wind deflector screen.
- Fully fitted wet bar with corian top.
- Stainless steel sink and tap with hot and cold water supply.
- Refrigerator.
- Bar stools (3).
- Speakers linked with Saloon entertainment system (2).
- Upholstered sofa seating on port and starboard side.
- Storage under sofa seats.
- Upholstered helm seat.
- FRP hard top.
- Lighting on underside of hard top.
- Stainless steel stanchions to hard top.
- Stainless steel railings.
- Self draining.

FLY-BRIDGE HELM

- Steering wheel.
- Port and Starboard engines displays.
- Trim tab gauge and switches.
- Rudder angle gauge.
- Winch control panel.
- Forward and aft search light switch.
- Bow thruster control.
- Navigation displays.
- Port and Stbd engines diagnostic, shutdown and ignition keys.
- Engine Throttle.
- Auto pilot display.
- Auto pilot control head.
- VHF hand set.
- Magnetic Compass.
- Switches of Flood light, Fly-bridge ceiling lights, Gauge lights, Deck lights, Horn.

SALOON

- LED TV 55".
- Home Theater system (Life style 48 Series).
- Satellite Receiver.
- Stainless steel framed sliding door to cockpit.
- Port and starboard side sofas.
- Sofa side tables.
- Coffee table.
- Display shelves.
- Windows with curtains.
- Curtains to main entrance door.
- Air conditioning with control switch.
- Architectural and LED decorative lighting.
- Lighting switches and AC sockets.
- Veneer/Leather/Fabric wall panels.
- Fitted carpet.

MAIN DINING

- Dining table.
- Dining chairs.
- Port and starboard side counters.
- Crockery shelves.
- Side windows with curtains.
- Architectural lighting.
- Lighting switches and AC sockets.
- Air conditioning with control switch.
- Veneer/Leather/Fabric wall panels.
- Wooden flooring.

GALLEY

- Corian counter top.
- S.S.Sink with hot and cold water supply.
- Storage lockers with shelves.
- Fridge.
- Freezer.
- Dish washer.
- Oven.
- Induction hub.
- Teppan yaki.
- Deep fryer.
- Vinyl flooring.
- Stair case to lower deck forward cabins.
- Side window with pleated blinds.
- Architectural lighting.
- Lighting switches and AC sockets.
- Air conditioning with control switch.

WHEELHOUSE HELM

- Steering wheel.
- Engine room exhaust fan control switch.
- Bilge alarm switch panel.
- Navigation displays.
- Port and Starboard engine displays.
- Trim tab gauge and switch.
- Magnetic Compass.
- Rudder angle gauge.
- Wind shield wiper controls.
- Bow thruster control switch.
- Auto pilot display.
- Engine throttle.
- Port and Starboard engine warning, ignition, diagnostic, shutdown controls.
- Bilge pump switches.
- Navigation switches of horn, anchor light, navigation light, pilot house light, dash board light, under water lights and gauge light.
- Search light switches.
- Forward and aft Search light selector switches and control switches.
- Hydraulic steering switch panel.
- VHF Radio hand set.

PANTRY

- Lockable water tight side pantograph door to side deck.
- Entrance door to Galley.
- Staircase to wheelhouse.
- Bottle cooler.
- Coffee machine.
- Access door to electrical cabin.
- Veneer/Leather/Fabric wall panels.
- Architectural lighting.

MAIN LOBBY

- Lockable water tight side pantograph door to side deck.
- Entrance door to day head toilet.
- Entrance door to owner's cabin.
- Staircase to lower deck cabins.
- Luggage cabin.
- Veneer/Leather/Fabric wall panels.
- Architectural lighting.

DAY HEAD TOILET

- Wash basin and tap with hot and cold water supply.
- Electric toilet.
- Extractor fan.
- Mirror.
- Sanitary accessories.
- Architectural lighting.
- Lighting switches and AC sockets.

OWNER'S STATEROOM

- LED TV 46".
- Home Theater system (Life style 35 Series).
- Satellite Receiver.

- Large double bed with drawers & mattress, pillows and bedspreads.
- Bed side tables.
- Wardrobes.
- Desk with Drawers.
- Counter table.
- Sofa seats.
- Sofa seat side table.
- Side windows with curtains.
- Air conditioning with control switch.
- wwwArchitectural lighting.
- Lighting switches and AC sockets.
- Veneer/Fabric/Leather wall panels.
- Fitted carpet.
- Entrance door to bath cabin.

EN SUITE

- Wash basin and tap with hot and cold water supply (2).
- Mirror.
- Cabinet.
- Bidet and Electric toilet.
- Hot and cold water shower mixer.
- Jacuzzi.
- Extractor fan.
- Frosted glass door to shower cabin.
- Architectural lighting.
- Sanitary accessories.
- Open shelves.
- Lighting switches and AC sockets.

GUEST LOBBY

- Stairs from main lobby.
- Architectural lighting.
- Lighting switches.
- Veneer/Fabric/Leather wall panels.
- LED lighting to steps.
- Entrance door to port double guest cabin.
- Entrance door to starboard double guest cabin.
- Entrance door to port twin guest cabin.
- Entrance door to starboard twin guest cabin.
- Storage locker.

DOUBLE GUEST STATEROOMS (STARBOARD & PORT SIDE)

- LED TV 32".
- Satellite Receiver.
- Large double bed with drawers (4) & mattresses, pillows and bedspreads.
- Bed side tables.
- Storm shutter storage.
- Open shelves.
- Wardrobe.
- Side window with curtain.
- Air conditioning with control switch.
- Architectural and LED decorative lighting.
- Lighting switches and AC sockets.
- Veneer/Fabric/Leather wall panels.
- Fitted carpet.
- Entrance doors to En Suite.

EN SUITE

- Wash basin and tap with hot and cold water supply.
- Storage.
- Open shelves.
- Mirror.
- Port hole with pleated blinds.
- Extractor fan.
- Electric toilet.
- Glass doors to shower cabin.
- Hot and cold water shower mixer.
- Sky shower.
- Architectural lighting.
- Sanitary accessories (tooth brush holder, soap holder, brush holder, towel hook and towel rail).
- Lighting switches and AC sockets.

TWIN GUEST STATEROOMS (STARBOARD & PORT SIDE)

- LED TV 26".
- Satellite Receiver.
- 2 x Single beds with drawers & mattresses, pillows and bedspreads.
- Bed side table.
- Wardrobe.
- Storage.
- Port hole with curtain.
- Air conditioning with control switch.
- Architectural lighting.
- Architectural & LED decorative lighting.
- Lighting switches and AC sockets.
- Veneer/Fabric/Leather wall panels.
- Fitted carpet.
- Entrance door to En Suite.

EN SUITE

- Wash basin and tap with hot and cold water supply.
- Mirror.
- Open shelves.
- Electric toilet.
- Hot and cold water shower mixer.
- Sky shower.
- Extractor fan.
- Glass door to shower cabin.
- Sanitary accessories.
- Architectural lighting.
- Lighting switches and AC sockets.

CAPTAIN'S CABIN

- Bed with mattress, pillows and bedspreads.
- Bed side table.
- Wardrobe.
- Porthole with pleated blinds.
- Storage under the bed.
- Air conditioning with control switch.
- Architectural lighting.
- Lighting switches and AC sockets.
- Veneer/Fabric/Leather wall panels.
- Vinyl flooring.
- Entrance door to En Suite.

EN SUITE

- Wash basin and tap with hot and cold water supply.
- Mirror.
- Electric toilet.
- Hot and cold water shower mixer.
- Extractor fan.
- Sanitary accessories (tooth brush holder, soap holder, brush holder, towel hook, and towel rail).
- Architectural lighting.
- Lighting switches and AC sockets.

CREW LOUNGE

- Corian counter top.
- Stainless steel sink and tap with hot and cold water supply.
- Refrigerator.
- Hob.
- Microwave.
- Hood.
- Washing machine.
- Overhead storage lockers.
- Sofa seat and table.
- Port holes with pleated blinds.
- Stair case to aft cockpit.
- Lockable water tight door leading to swim platform.
- Lockable water/gas tight door to engine room.
- Air conditioning with control switch.
- Architectural lighting.
- Lighting switches and AC sockets.
- Veneer wall panels.
- Entrance door to captain cabin.
- Entrance door to store cabin.
- Vinyl flooring.

FORWARD CREW CABINS (1 & 2)

- 2 x Single bunk beds.
- Open shelves.
- Wardrobe.
- Port hole with curtains.
- Air conditioning with control switch.
- Architectural lighting.
- Lighting switches and AC sockets.
- Veneer/Fabric/Leather wall panels.
- Vinyl flooring.
- Entrance door to En Suite.

EN SUITES

- Wash basin and tap with hot and cold water supply.
- Electric toilet.
- Medicine cabinet.
- Niche.
- Hot and cold water shower mixer.
- Extractor fan.
- Foldable glass door to shower cabin.
- Sanitary accessories (tooth brush holder, soap holder, brush holder, towel hook and towel rail).
- Vinyl flooring.
- Architectural lighting.
- Lighting switches and AC sockets.

MISCELLANEOUS

- Fenders (6).
- First Aid kit (1).
- Fire blanket (1).
- Tool kit (1)
- Mooring ropes.
- Boat hooks (2).
- Life rings (2).

ELECTRICAL SYSTEM

- Electrical system of the boat is 3-phase, 380220V, 50Hz.
- Main power supplied by two generators.
- Generator 40Kw, 50Hz (2).
- 3-phase dockside connection (100Amp) with cable and cable master system.
- Main switch board system equipped with magnetic contactors, overload protections and short circuit protections.
- Outgoing circuits protected by circuit breakers.
- Battery isolation switches.
- 12V, 200Ah Batteries for Port side engine (2).
- 12V, 200Ah Batteries for Starboard side engine (2).
- 12V, 200Ah Batteries for Service (2).
- 12V, 200Ah Batteries for Emergency (2).
- 12V, 100Ah Batteries for Port Generator (2).
- 12V, 100Ah Batteries for Starboard Generator (2).
- Batteries are charged by two battery chargers.
- 80Ah, 24V Battery charger for Engine Batteries.
- 100Ah, 24V Battery charger for Service and Emergency batteries.
- Main panels are placed in engine room.
- 380220V AC Main distribution panel.
- 220V AC Sub distribution panel.
- 24V DC distribution panel.
- Secondary distribution panels.
- Main deck 220VAC distribution panel.
- Lower deck 220VAC distribution panel.
- 12&24VDC Navigation panel.
- Tank sentry monitoring panels located in engine room.
- Fuel tanks.
- Fresh water tank.
- Black water tank.
- Grey water tank.
- 220V AC Power outlets in all cabins.

- Cathodic protection provided by cross bonded zinc anodes.
- Port and Starboard Generators isolation battery switches and interconnection panel.
- Port and Starboard engines isolation switches and interconnections panel.

POWER AND DRIVE SYSTEMS

- Power assisted electro hydraulic steering system.
- Direct shaft drive through tunnel.
- Propellers, 5-blade, AB2 material (2).
- Rudders (2).
- P-brackets (2).
- Duplex steel tail shafts (2).
- Hydraulic trim tabs (2).
- Trim tabs switches and gauges at lower helm and main helm position.
- Engine Throttle.
- Seawater strainers for main engines (2).

NAVIGATION SYSTEM

- 14" Multi display monitors (2).
- Raymarine (G Series)
 - o GPS (2).
 - o 72 NM Radars (2).
 - o Depth sounder (2).
 - o Speed logs and wind speed (dual stations).
 - o Auto pilot (dual stations).
 - o VHF Radio (dual stations).
 (Navigation system upgrade is available on request as optional)
- Mast Area– equipped with Radars, Satellite antenna, Wind speed, Navigation lights, Lightening arrester, Search light (fwd and aft) and Horn.
- Alarm Monitoring System for all tanks, water maker, smoke detectors and bilge alarm.
- Camera monitoring system.

FUEL SYSTEM

- Fuel capacity 4000 US Gallons (15141.6 liters).
- Port side fuel tank capacity 1839 US gallons (6961.372 Liters).
- Star board side fuel tank capacity 1839 US gallons (6961.372 Liters).
- Fuel day tank 322 US gallons (1218.903 Liters).
- Integrated FRP fuel tanks in engine room.
- Port and Star board side fuel tanks interconnection with Fuel day tank.
- Fuel fillers on port and starboard side decks.
- Manual fuel shutoff valve pull-out pin cable fitted at aft cockpit.
- Fuel filters for engines/generators.
- All tanks provided with manhole covers, ventilation pipes and connection pipes to manifold.
- Isolation valves to fuel manifold.
- Interconnection fuel lines are made of stainless pipes.
- Electric tank senders for all fuel tanks.

FRESH WATER SYSTEM

- Water tank capacity 800 US Gallons.
- Pressurized hot and cold water system.
- 24VDC Fresh water pump (1).
- 220VAC Fresh water pump (1).
- Water heaters capacity 60Lt (2)
- Water level monitoring panel located in the engine room.
- Water maker capacity 140L/h for

- fresh water (1).
- Water filler on side deck.
- Electric tank sender.
- 26mm Mepla piping throughout supplying all outlets.
- 32mm Mepla piping from tank to manifold.
- Dock connection for shore water supply on aft swimming platform with pressure regulator.
- Fresh water deck wash connection at aft swim platform and forward area.

FIRE EXTINGUISHING SYSTEM

- Fixed fire extinguisher in engine room connected with pull cable to cockpit.
- Fire alarm and Fire bell at wheelhouse and engine room.
- Smoke detectors in all cabins.
- Hand operated portable fire extinguishers (12) installed for immediate use in all cabins.
- Mechanical pump with bypass valves for fire and bilge purpose (1).
- Fresh water line connection to fire & bilge manifold for priming and cleaning.
- Plumbing are made of CuNiFer/ Stainless steel pipes.

BILGE SYSTEM

- Bilge water high level alarm system.
- Electric submersible bilge pumps 2000 GPH with float switches fitted in each water tight compartment at beneath the following areas:
 - Forward crew cabins.
 - Guest lobby.
 - Port & Starboard double guest cabin.
 - Engine room.
 - Crew lounge.
 - Rudder compartment.
- Bilge suction lines are connected to manual bilge pump and mechanical pump with bypass valves for suction of the bilge water from engine room and rudder compartment.

AIR CONDITIONING SYSTEM

- Chilled water air conditioning system with capacity 260 000 BTU.
- All compressors on 380 VAC, 3-phase.
- All air handlers on 220VAC, Single phase.
- All cabins Air handlers are connected with Chillers system.
- Chiller water pumps (2).
- Sea water pumps (2).
- Air conditioning control switches in all cabins.
- Plumbing lines are made of PVC pipes.
- Pipe lines are well insulated.

SAFETY EQUIPMENTS

- Solas Life jackets (15).
- 24" Life rings (2).
- Life rafts - 2 x 8 persons capacity each side- (4).
- First Aid kit (1).
- Fire blanket (1)
- Fire dampers safety on Port and Starboard side vent shaft.
- Portable fire extinguishers as per plan.

OPTIONALS

- Hydraulic Swim platform

- transformer.
- Jacuzzi system.
- Stern thruster 25HP.
- Crane capacity 800 Kg.
- TRAC 370 Stabilizer system.
- Spare Propellers.
- Spare Shafts.
- Teak decking at fly-bridge.
- Intercom telephone system.
- THURAYA Satellite Phone/Fax.
- 12 x Under water lights.
- Marble flooring and counter top in kitchen, bath cabins and bar.
- Multi zone Audio/visual + Automation system.
- Dinghy and Jetski.
- Upgraded Navigation system (customer request).
- Night vision camera monitoring system.



P.O. Box 666, Sheikh Khalifa Bin Zayed Street, Ajman, United Arab Emirates

T. +971 6 7406060, F. +971 6 7406062, gci@gulfcraftinc.com

www.gulfcraftinc.com

www.majesty-yachts.com

V 02. 2017

Pictures in this catalogue may be taken from different vessels of the same type for example purpose only. Performance estimates are given in good faith, but are in no way guaranteed. Dirt on the hull, damage to the propellers, external water and air temperatures and added weight, fuel and water carried can all adversely affect performance. For these and other reasons we can give no performance guarantees. Data and characteristics are not binding: details, colors, descriptions and illustrations are for information purpose only. The drawings and pictures may include specific equipment or modifications which are not part of the standard specifications of the vessel. Standard specifications may be defined differently in different sales territories. Gulf Craft Inc. reserves the right to make any changes in specifications or equipment without prior notice. In case on any inconsistencies between specification sheet, product catalogue and price list, the price list prevails. Customers are recommended to contact one of our sales representatives to reconfirm standard and optional features on the vessels.

SETTING NEW STANDARDS OF LUXURY

by *Gulf Craft*

V 0.2 2017