

VOLUME 5  
ISSUE IV

# INVICTVS

BY INVITATION ONLY

MAJESTY YACHTS 100 / SUNREEF YACHTS / THE TOP 100 MUST HAVE PRODUCTS / ARCADIA SHERPA



*"I am the master of my fate, I am the captain of my soul"*

William Ernest Henley



MAJESTY YACHTS 100

# Crowning Achievement

Just prior to hand-over to its new owner, we checked out the new Majesty 100 with Gulf Craft's CEO, Erwin Bamps, in Dubai. Offering 23-knots top speed, wonderful exterior and interior spaces, plus a fabulously unique sky-lounge to top it off, is this latest superyacht from the Gulf powerhouse their crowning achievement?







Floor to ceiling glazing in the main salon ensures guests aboard the Majesty 100 remain entirely immersed in their cruising environment, even when indoors.

**F**

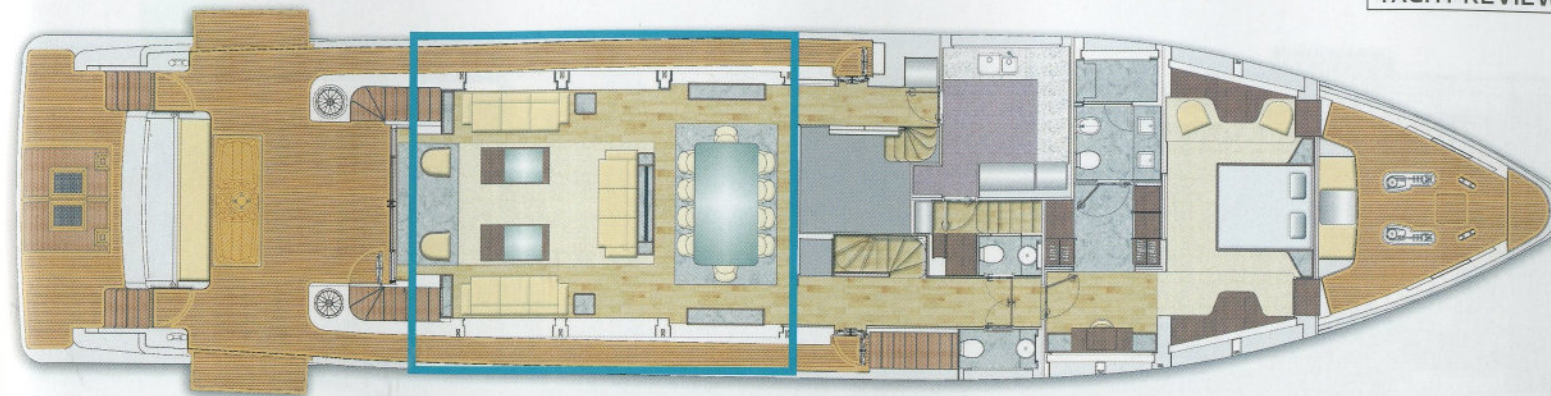
**First revealed** at the Dubai International Boat Show in March of this year, the first unit of the all new 100' from Majesty Yachts, the flagship brand of Gulf Craft, has just been delivered to her proud owner. Ahead of that delivery, we were provided with not only an overview of the project, but also a sense of context, in a review of the local market by the shipyard's CEO, Erwin Bamps. The new Majesty 100 encapsulates the expertise and experience Gulf Craft has garnered over 35-years of yacht building and demonstrates the yard's dedication to a constant program of optimization in quality and design.

Having just returned from the Sanctuary Cove boat show in Australia, where he spoke at the Asian yachting association's conference on the progress of the sector in the Middle East, Bamps is quick to point out how interconnected waterfront destinations are increasingly putting Dubai and the UAE on the map; as both an emerging attractive yachting destination for visiting yacht owners and for local residents.

"This is a very exciting time for us as yacht builders," said Bamps. "From the recently announced Dubai Harbour project and the Dubai Canal, to the Deira Islands and the Port Rashid Marina, aspiring yacht owners will soon be spoiled for choice when it comes to how and where they want to use their craft. Combined, these ambitious waterfront projects will pave the way to a thriving yachting community that will largely be comprised of younger boaters." The burgeoning calendar of sporting and cultural events in the emirates—with F1, world-class golf, horseracing and the recently opened Dubai Opera House—all no doubt add to the already attractive nature of the UAE as a destination.

Turning to the Majesty 100, which was the talk of the show during her debut, Bamps attributes this to the fresh strong aesthetics and the design, its place in a popular sector of the market and the flexibility inherent in the package they have created. "Because of her practical, yet powerful, attributes in both engineering and design, the Majesty 100 is perfect for

entry-level superyacht owners," he says, "whether they are looking for a waterfront retreat or an oceangoing adventure. Its delivery marks an exciting new phase in the model's milestone, and we're thrilled to see our team's efforts come to fruition." At the dock the Majesty 100 exudes an imposing presence, with her high bow tracing back amidships to enclose the on-deck owner's staterooms that make full use of the 23' 4" (7.1m) beam. The edgy flowing facets of the angular exterior lines lend a dynamic appeal to the Majesty 100's exterior, while the high vantage point of the forward social area will no doubt make it a popular spot both while enjoying a cooling breeze at anchor or in the cauldron of an F1-encircled marina. Even from the exterior we can see the captain enjoys the benefits of a raised pilot-house, suggesting an efficient interior arrangement, and the wraparound glazing that protects the forward section of the upper deck certainly demanded further investigation, duly enticing us onboard where we headed directly up to the sundeck.



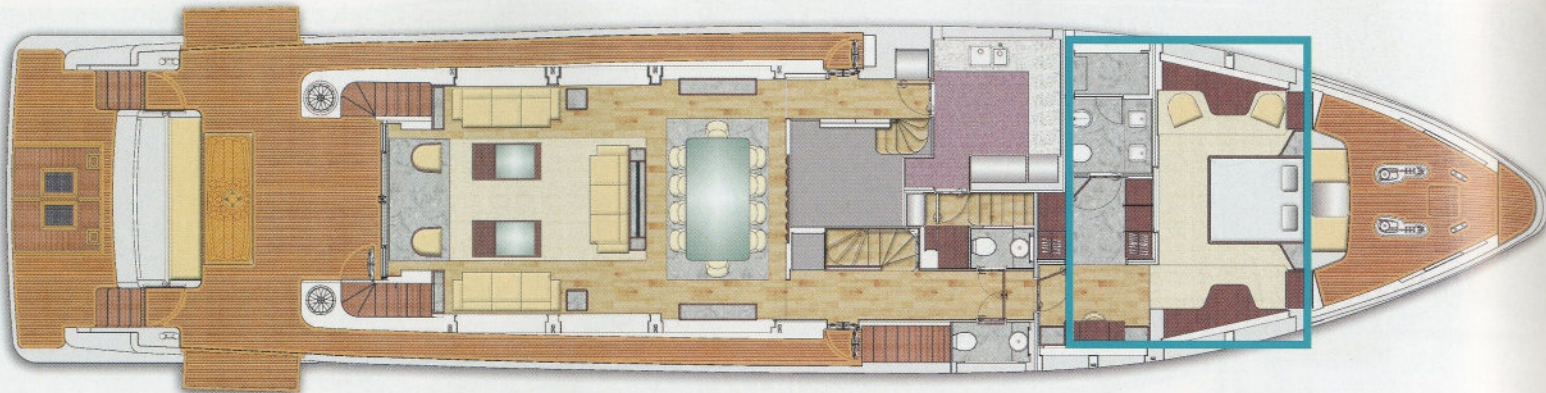
The Majesty 100 is the first in Majesty Yacht's collection to have a partially enclosed flybridge, allowing guests sitting within its spacious sky-lounge area to enjoy breathtaking panoramic views. It's as though one is seated on a traditional flybridge, but with the added luxury and comfort offered by indoor living. Views forward from such a salon are rare and so spectacular it makes us wonder why more designers don't employ this touch, while aft the interior space flows seamlessly into the aft terrace. One doesn't have to head outside for fresh air however, as simply sliding down the glass panels and opening the folding doors fully; the salon converts into an indoor-outdoor lounge space. It's

**The true signature of the Majesty 100 is the versatile upper deck salon with forward facing views. It can be fully enclosed, or opened up with the drop-down glazing, as the situation and climate dictates.**

certainly a suitably crowning achievement for a yacht that carries 'majesty' in its name. Descending, we drop into the raised wheelhouse, characterized by its 270-degree vertical glass panels that is yet another first for Gulf Craft, the captain of the Majesty 100 enjoys unobstructed views of the surrounding seascapes. Here the master commands the power supplied by two 1,900 hp MAN engines, enabling the Majesty 100 to achieve an impressive maximum speed of 23-knots. Here Bamps points out the shipyard's vast experience in literally thousands of craft delivered. "The superior engineering and hull design makes her very fuel-efficient," he promises. "This is obviously not just







The master stateroom and en-suite demonstrate Majesty's determination to utilize only high quality materials and fittings.

apparent in the top speed, but also in an extensive range in excess of 1,500-miles when operating at displacement speeds."

Bamps also points out that the shipyard elected to fit the Majesty 100 with a V-drive propulsion system, therefore locating the engines further aft than is traditional. Keen to see how this translated to increasing the space available for guest accommodation on the lower deck, we continued our tour. Moving first to the main deck we found sweeping floor-to-ceiling windows that allow natural light to flood through the main salon. The layout follows the traditional tried-and-tested format with a lounge area aft and dining forward, served by a galley to port and starboard guest lobby.

In the forward master staterooms the abundance of lights and views that pour in through the lateral glazing highlights the clean contemporary nature of the interior design. The traditional forward facing double berth face the en-suite that makes full use of the space available, and dressed with premium marble countertops and high-end fixtures and fittings, there's no doubting Gulf Craft's dedication to sup-



plying their prestigious clientele with the best available. The fit and finish is testament to the shipyard's strict ongoing quality control program, while the grain matching in both the stone and woodwork signifies attention to detail.

Down below we find the guest accommodation does indeed benefit from the choice of propulsion system, with the generous volumes of the en-suite cabins belying the 104' overall length of the yacht. Guest entertainment is well taken care of with a high-end AV-package that includes Bang & Olufsen speakers, ensuring a crisp and rich quality soundtrack to the movies, TV shows and music selected from the yacht's main server. Offering accommodation for twelve guests—spread over five en-suite guest rooms and the master suite—expansive interior and exterior entertainment spaces, plus a shallow draft of just 5' 5", the Majesty 100 would certainly make an attractive proposition on both the Med and Caribbean charter markets.

Ending our tour in the cockpit, Bamps has saved one last surprise for us: two hydraulic extendable balconies fixed on both ends of the aft-seating area offer passengers an extended cockpit space and un-



interrupted views to the horizon. It's all very much in keeping with the current trend for placing the in the centre of their surrounding environment. Here we settle for a moment and talk over some of the additional engineering features Gulf Craft have incorporated, like the fin stabilizers and the proprietary tender launch/recovery system that Gulf Craft designed and engineered entirely in-house.

The effort expended by Gulf Craft on their new 100 is an indication of what Bamps reports is a recovering demand for entry level superyachts, both from new millennials and existing clients—this unit, christened MY Nahar—going to a client on his second delivery from the shipyard. With this yacht Gulf Craft have incorporated ample interior and exterior areas for relaxation, with one often flowing directly into the other. The flybridge is certain this model's piece de resistance, offering a wet bar, electric barbecue, and even an optional Jacuzzi, it provides guests both a unique experience and versatility. With this new Majesty 100 this powerhouse shipyard from the Emirates has once again delivered a truly royal yachting experience. Long may it reign.



V-drive propulsion creates additional volume below, resulting in five guest cabins, plus the on-deck owner's suite.



SPECIFICATIONS	
Length overall:	104' 11" (31.70m)
Beam:	23' 4" (7.10m)
Draft:	5' 5" (1.70m)
Displacement:	123 t (approx)
Fuel capacity:	4,150 US gal (15,710 l)
Fresh water capacity:	925 US gal (3,500 l)
Black water capacity:	200 US gal (760 l)
Grey water capacity:	200 US gal (760 l)
Generators:	2x 50 kW, 50Hz
Engines:	2x MAN 1,900hp
Propulsion:	V-Drives
Top Speed:	23-knots
Cruising Speed:	17 knots
Range at Economical Speed:	1500nM at 12 knots
Naval Architecture:	Gulf Craft Design Studio
Exterior Design:	Gulf Craft Design Studio
Interior Design:	Gulf Craft Design Studio
Builder:	Gulf Craft (UAE)